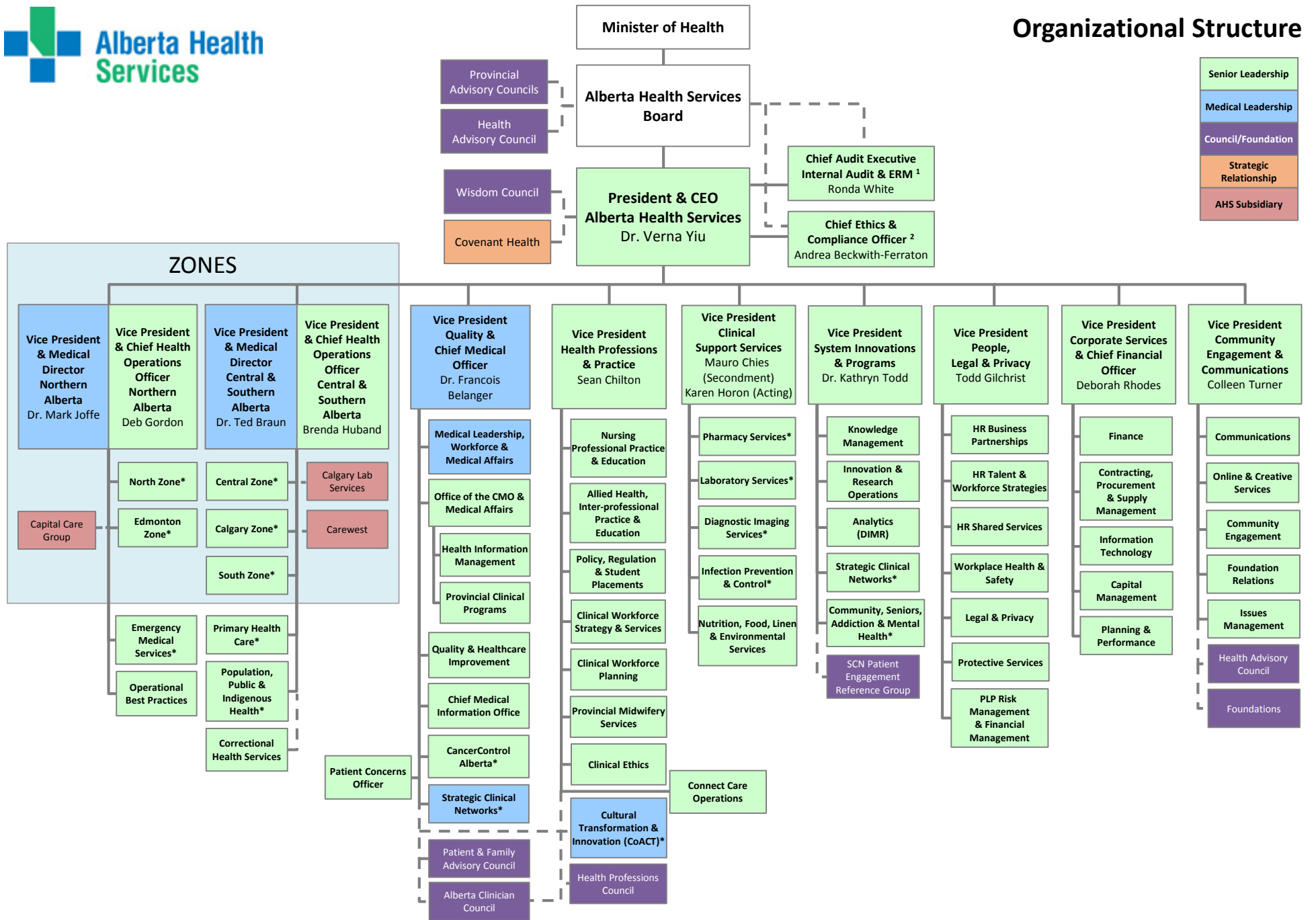


* Denotes Clinical Leader Dyad/Partner Relationship

¹ Administratively reports to VP Corporate Services & CFO

² Administratively reports to VP People, Legal & Privacy



Senior Leadership
Medical Leadership
Council/Foundation
Strategic Relationship
AHS Subsidiary

* Denotes Clinical Leader Dyad/Partner Relationship
 1 Administratively reports to VP Corporate Services & CFO
 2 Administratively reports to VP People, Legal & Privacy